

SMART KID



**BULL**  
MAKING INDIA PROUD  
Now in **62+**  
**COUNTRIES**



SKID STEER  
AV 490



**BULL MACHINES PVT.LTD.**  
SF.NO. 5/1A, L&T By Pass junction,  
Trichy Road, Coimbatore - 641 103, INDIA.  
☎ : +91 98426 70184  
✉ : Info@bullmachine.com

**Sales**  
☎ : +91 98422 87770  
✉ : Sales@bullmachine.com

**International sales**  
✉ : exports @bullmachine.com

**Service and Spares**  
☎ : 88832 88832  
✉ : care@bullmachine.com

Dealer:

@ # bullmachines

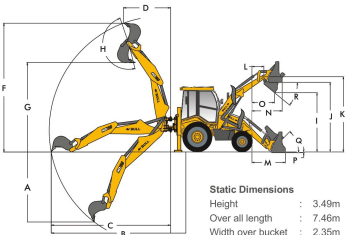
www.bullindia.com

WORLD'S MOST  
EFFICIENT BACKHOE



**HD96**

**THE TRUE ALL ROUNDER**



| EXCAVATOR PERFORMANCE                     | STANDARD             | EXTENSION (OPTION) |
|---|----------------------|--------------------|
| Standard GP Bucket Capacity               | 0.27 cu.m (standard) |                    |
| A Maximum DIG Depth                       | 4.60 m               | 5.59 m             |
| B Reach Ground Level to Rear wheel center | 6.80 m               | 7.91 m             |
| C Reach Ground Level to slew center       | 5.50 m               | 6.60 m             |
| D Reach at full Height to slew center     | 2.85 m               | 3.56 m             |
| F Maximum working Height                  | 5.92 m               | 6.77 m             |
| G Maximum Load over Height                | 4.14 m               | 5.02 m             |
| H Bucket Rotation - Power                 | 188°                 |                    |
| Bucket Tear out Force                     | 6651 kgf*            |                    |
| Dipper Tear out Force                     | 3316 kgf*            |                    |

| LOADER PERFORMANCE                      | STANDARD             |
|---|----------------------|
| Standard Bucket Capacity                | 1.26 cu.m G.P Showel |
| I Dump Height                           | 2.96 m               |
| J Load Over Height                      | 3.39 m               |
| K Pin Height                            | 3.61 m               |
| L Pin Forward Reach                     | 0.42 m               |
| M Reach at Ground                       | 1.47 m               |
| N Reach at full height                  | 1.28 m               |
| O Reach at full Height bkt Dumping      | 0.89 m               |
| P Below ground level DIG Depth          | 0.1 m                |
| Q Roll back at Ground                   | 49°                  |
| R Dump Angle                            | 45°                  |
| Bucket Break-out Force                  | 8793 kgf             |
| Loader Arm Break-out Force              | 5642 kgf             |
| Pay Load                                | 2000 kgf             |
| Lifting capacity at loader arm hook pin | 2600 kgf @ 230 bar   |

### ENGINE

Kirloskar 4R 1040, T EURO-II, Diesel Engine  
 Gross Power : **71.6 kW (96 HP) @ 2200 RPM**  
 Gross Torque : **377 Nm @ 1400 RPM**

### TRANSMISSION

**CARRARO** synchro - shuttle transmission with integral torque converter

### STEERING

Power Steering

### ELECTRICAL

12 V battery system (180Ah)

### TYRES

#### FRONT

2WD- 9.00X16 - 16PR  
 4WD- 12.5/80X18 - 12PR

#### REAR

Industrial (Standard) : 16.9X28 - 12PR  
 19.5LX24 - 12PR  
 Optional : 14X25 - 20PR (Heavy Duty)

### SPEED

Forward Max : **40 Km/Hr**  
 Reverse Max : **9.3 Km/Hr**

### HYDRAULICS

Smart Hydraulics : **3480 p.s.i. (240 bar)**  
 Pump O/P : **134 LPM @ 2200 RPM**

### WEIGHT

**8150 Kgs** with Standard GP Bucket option

### DRIVE

4 Wheel Drive

### BACKHOE BUCKET OPTIONS

0.10 cu.m, 0.22 cu.m, 0.31 cu.m

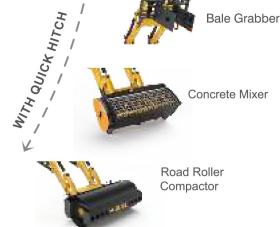
### WORLD CLASS CABIN COMFORT



### EASY TO MAINTAIN AT LOW COST



**WHEN PERFORMANCE MEETS FLEXIBILITY**  
**THE ALL ROUNDER MACHINE**



[www.bullindia.com](http://www.bullindia.com)

### WORLD'S BEST COMPONENTS

